



# 10 litre

## EasyFlex™ 285

**Series EasyFlex™ 285** is a conical packaging with patented lid design, as easy to open as to re-close. An advantage that is appreciated by both end-users and the staff who prepare and mix paint in the store. Besides the lid's foldable plastic closure, the EasyFlex™ solution is solid tin-plate and provides all the material qualities of the metal. It has the durability, strength, finish and endless design opportunities.

## Conical, flexible and User-friendly





# 10 litre

## EasyFlex™ 285

EasyFlex™ Series 285 is a conical pail for paint and chemical/technical products. Easy to open and re-close with the EasyFlex™ lid with plastic ring. The conical design of the EasyFlex™-pail is logistically advantageous as empty packs are supplied stacked inside each other resulting in higher quantities per pallet. The external is available in plain, white or decorated to customers' request. The internal is available in lacquered

### Pails

Designation	Height mm	Qty/cardboard	Qty cardboard/ pallet	Qty/ pallet
10 litre	215	-	-	220

### Deckel

Designation	Qty/ cardboard	Qty cardboard/ pallet	Qty/ pallet
EasyFlex™ 285 lid	272	2	-

### Internal protective coatings

Designation	Number of layers	Lacquer	Area of use*
A	1	Gold	Food Certain technical products
B	1	Pigmented	Latex paint Alkyd enamels, broken with water based tinting pastes.
C	2	Gold Pigmented	Water based paints, without rust protection inhibitors. Not suitable for strong solvents.
D	2	Gold	Corrosive industrial coatings

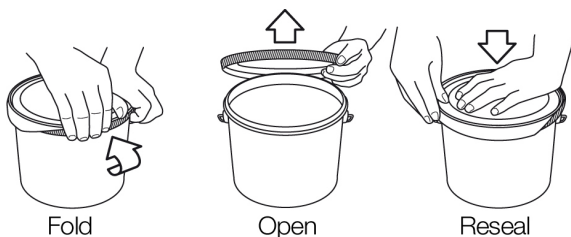
\*This is only a general indication of the appropriate areas of use. The internal coating lacquer should always be tested with the product for which the pail is intended to be used



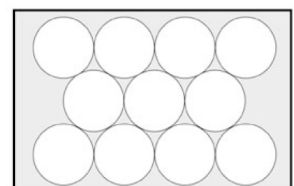
External dimensions. The height of the pails is shown in the left list.



### Safe closure – easy to open



Pallet arrangement



11 pails/layer